

Southwold North Wall Promenade Repairs

Southwold, Suffolk

What are we updating you about?

East Suffolk Council's Coastal Management Team have appointed the Water Management Alliance (WMA) to complete repairs and maintenance of coastal protection assets along the Suffolk coast, which are owned or managed by ESC. WMA will be completing works at Southwold as part of that contract.

Where is this work happening?

A map of where the work is taking place is on page 2 of this factsheet. The work take place along the section of promenade which has collapsed north of Southwold Pier. Both Southwold Pier and Southwold Beach car parks will remain open. The works compound will be in the ESC car park so there will be a reduced number of spaces for the duration of the work. There will be no access to the promenade or beach where the works are taking place.

When are we doing the work?

Promenade Repair

Repair work is due to start from Monday 24th February 2025 and last approximately 3 weeks. All work is subject to safe working conditions i.e. tide and weather condition dependant. This work is being completed ahead of the planned repairs to the seawall toe. The promenade will remain closed until the seawall repairs are complete.

Seawall Repair

These works are scheduled to start after Easter with the site set up beginning on Tuesday 22nd April 2025 and is intended to be completed before the start of the school summer holidays. We will share further information about the works when details have been finalised.

What will we be doing?

WMA will be filling in the voids under the promenade and replacing the collapsed slabs. We will work hard to keep any inconvenience to a minimum and ask the public to please take note of the contractor's signage when work is happening.

Why are we doing this work?

This work will provide important maintenance to the seawall north of Southwold Pier and is an important part of ESC's commitment to ensure that the coastal assets in Southwold are working effectively and are safe for the public.

Undertaking regular targeted maintenance means that we can maximise the lifespan of coastal protection assets, ensuring that we make the most of every pound spent and achieve a better return on public investment.

Contact Us

Coastal Management, Riverside, 4 Canning Road, Lowestoft, NR33 0EQ

If you would like this factsheet in another format please do let us know by emailing:

coastalmanagement@eastsoffolk.gov.uk

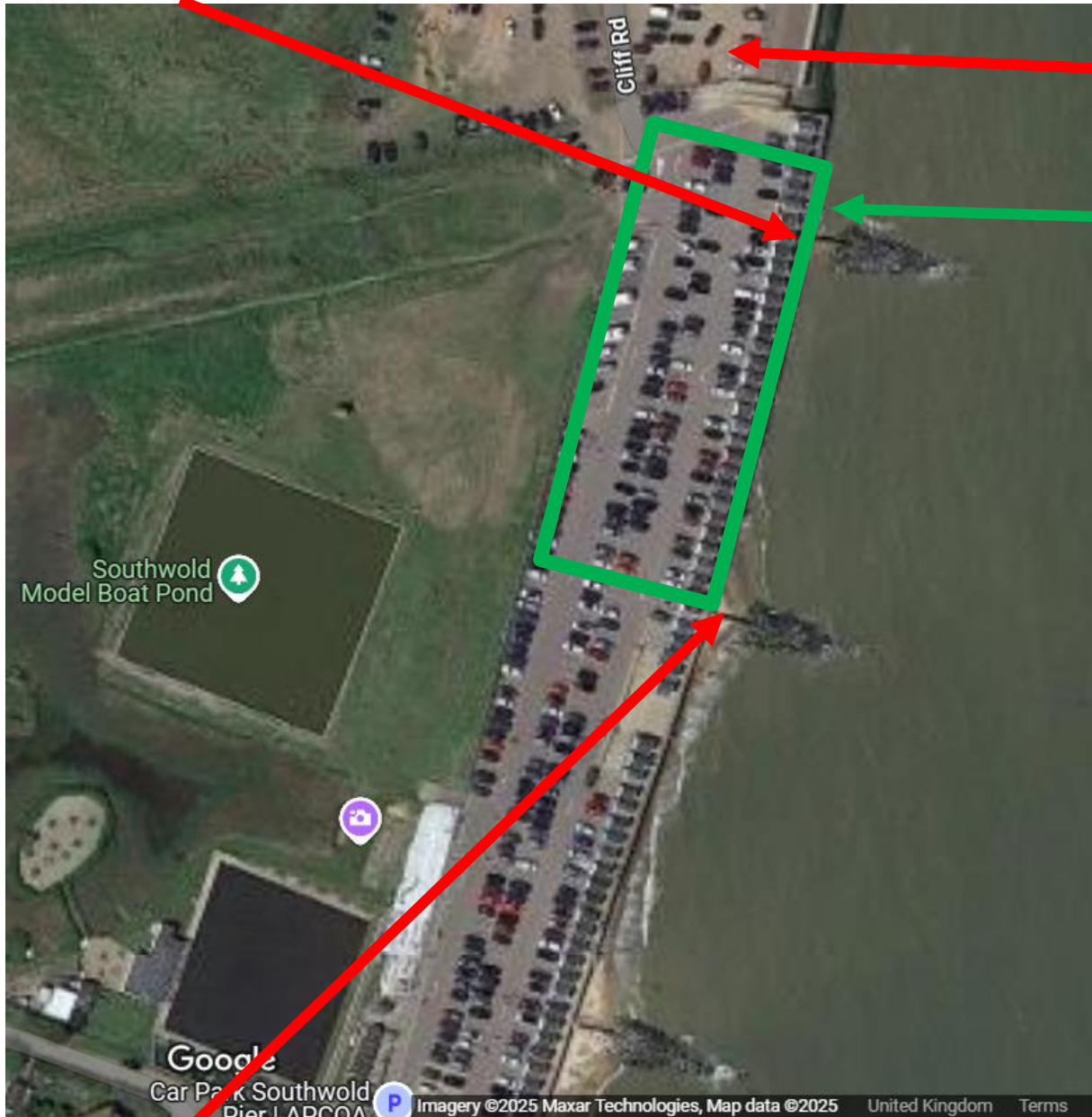
February 2025

Southwold North Wall Promenade Repairs

Southwold, Suffolk

Location Map

Northern extent of works



Car park open as usual

Parking restrictions - site compound

Southern extent of works

Follow us on social media

X: @CPE_NandS | @EastSuffolk | @The_WMA

Facebook: @CPENandS | @EastSuffolkCouncil | @WaterManagementAlliance

Instagram: @cpe_nands | @eastsuffolkcouncil

www.coasteast.org.uk | www.eastsuffolk.gov.uk | www.wlma.org.uk