

25 March 2020
IE20/016/CSJ

JPC Environmental Services
(A Division of J P Chick & Partners Limited)

7 Museum Street Ipswich Suffolk IP1 1HQ
T 01473 280699 F 01473 280701
E. ipswich@chick.co.uk www.chick.co.uk



**SITE VISIT TO LIFT COVERS AND INSPECT BELOW GROUND TANKS TO ASSESS CURRENT SITE CONDITIONS
SITE AT JUNCTION OF STATION ROAD AND BLYTH ROAD, SOUTHWOLD, IP18 6AX**

1.0 INTRODUCTION

1.01.1 JP Chick & Partners Ltd were appointed by Southwold Town Council to undertake a site visit to lift covers and inspect the below ground tanks, in order to assess the current site conditions and provide updated drawings.

1.01.2 Prior to the site visit, a Ground Penetrating Radar Survey (GPRS), Utility Mapping and CCTV survey of the current drainage was undertaken, to map these features onto a map of the site. Due to the interference from congested underground apparatus at the site, this has had an affect on locating the exact locations of the below ground tanks, and therefore locations identified as 'possible tank' on the survey drawing. Our site visit and inspection of the below ground tanks by accessing covers and ascertaining the contents of the tanks, has enabled us to update the drawings with the tank numbers and a table detailing the contents, size, diameter and length of each tank, which is shown in table 1 below. The updated drawings are shown on the subsequent pages.

Tank	Contents/ Decommissioned	Size (Gallons)	Diameter (m)	Length (m)
Tank 1	Foam filled (Decommissioned)	500	~1.2m	~1.8m
Tank 2	Thick black engine oil present	500	~1.2m	~1.8m
Tank 3	Accessed but blocked at @~1.0m bgl. Tank was dry	1,000	~1.2m	~3m
Tank 4	Waste Oil	500	~1.2m	~1.8m
Tank 5	Foam filled (Decommissioned)	500	~1.2m	~1.8m
Tank 6	Foam filled (Decommissioned)	2,000	~1.6m	~3.6m
Tank 7	Foam filled (Decommissioned)	2,000	~1.6m	~3.6m
Tank 8	Concrete slab over disused tank- could not be accessed	500	~1.2m	~1.8m
Tanks 9A & B	Oily water	Likely to be 2 x 500 <i>(based on an internal depth of 1.265m measured)</i>	~1.2m	~1.8m
Tank 10	Oily water	Likely to be 500 -1,000 <i>(based on an internal depth of 1.36m measured)</i>	~1.2m	~1.8-3.0m

Table 1 – Tank Detail



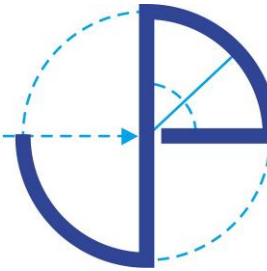
Member of the Association of Consulting Engineers
Directors: J P Chick - MSc DIC C.Eng C.Env FAE FICE FStructE MCIHT MCIARB FConSE
P J Davis - BSc C.Eng FStructE MICE MCIHT IMaPS FConSE
R M Crowther - PIEMA

Registered Office: 7 Museum Street Ipswich Suffolk IP1 1HQ T 01473 280699 F 01473 280701 Registered No: 4806356

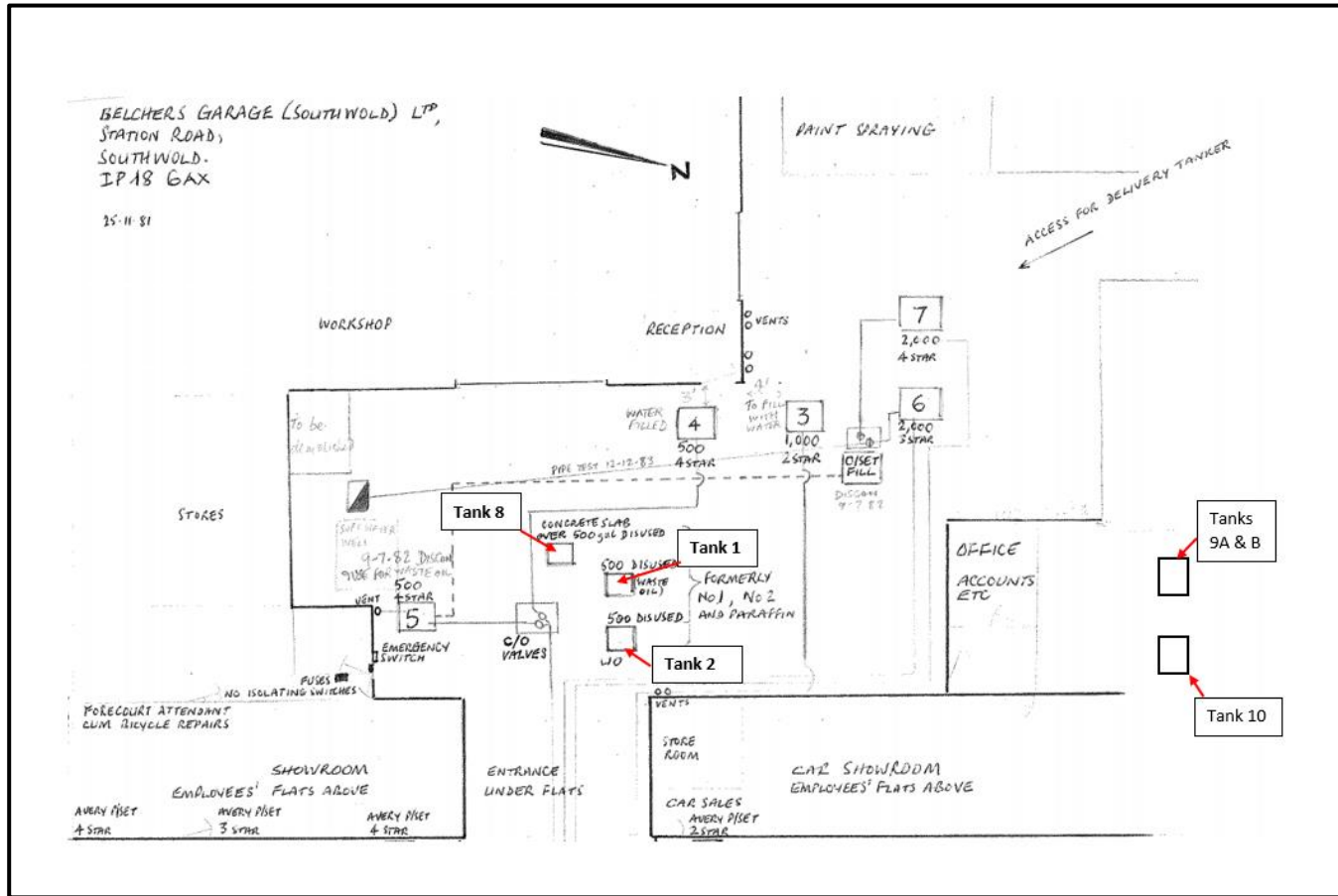
JPC Environmental Services

(A Division of J P Chick & Partners Limited)

7 Museum Street Ipswich Suffolk IP1 1HQ
 T 01473 280699 F 01473 280701
 E. ipswich@chick.co.uk www.chick.co.uk



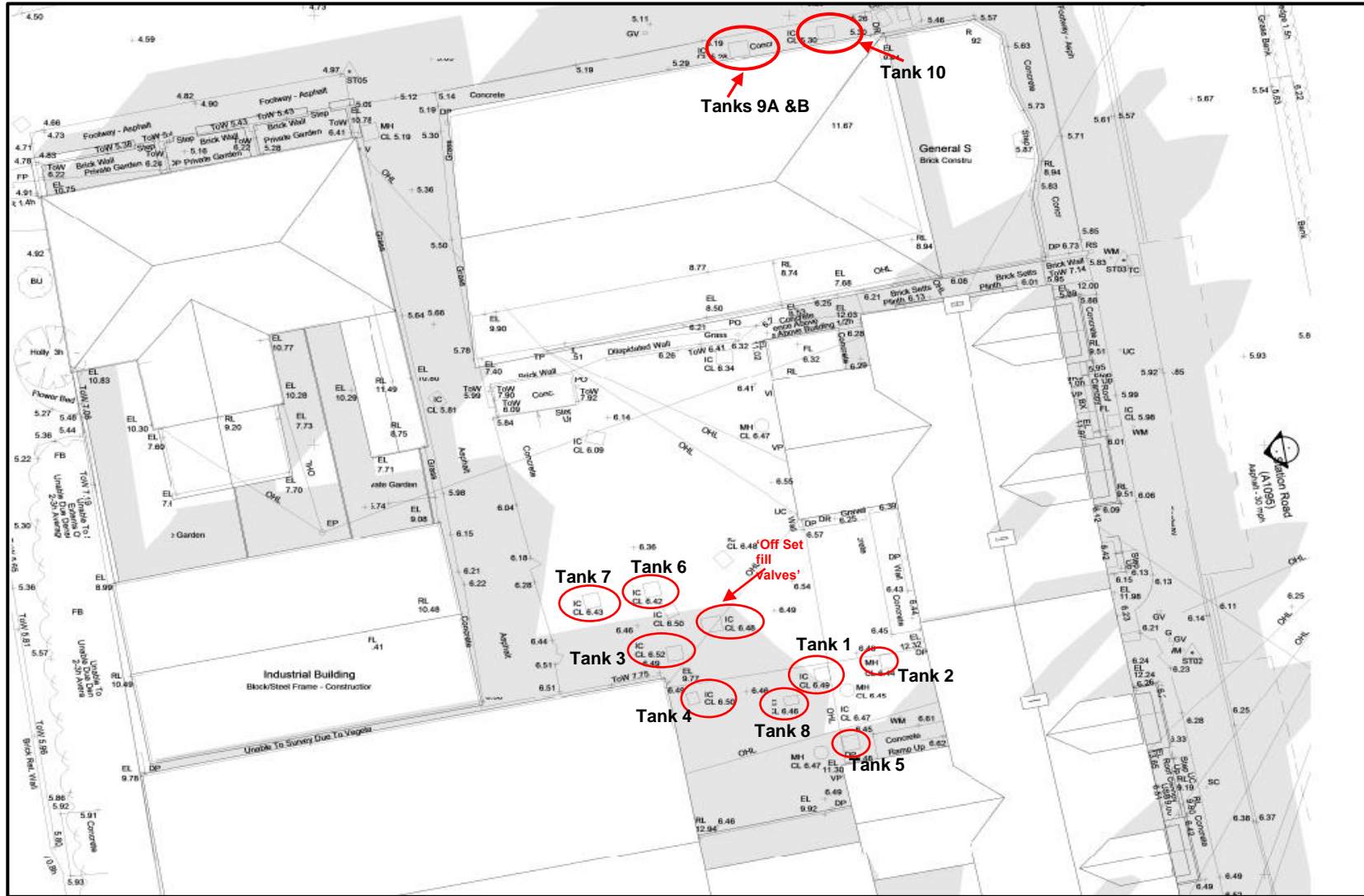
Petroleum Officer Plan



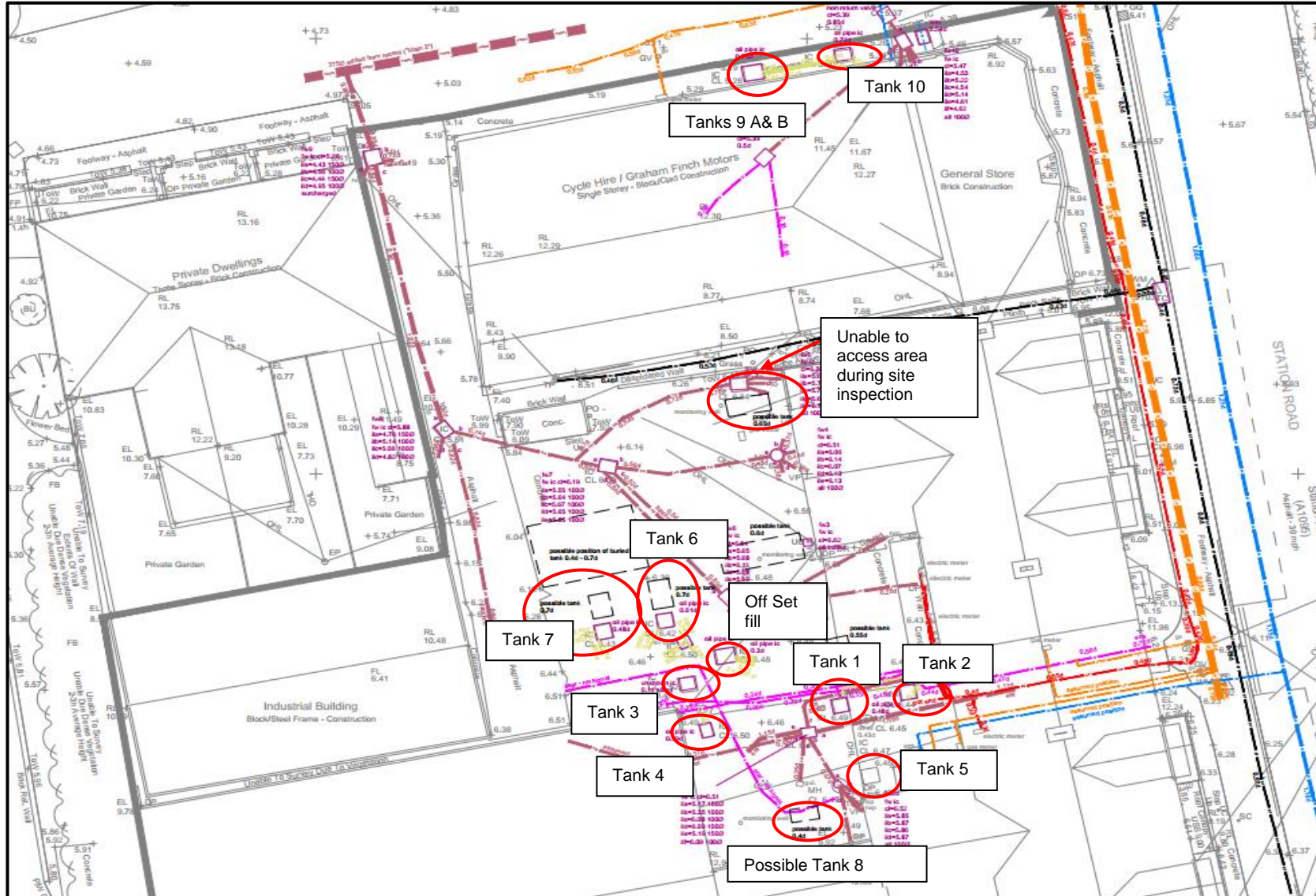
Member of the Association of Consulting Engineers
Directors: J P Chick - MSc DIC C.Eng C.Env FAE FICE FStructE MCIHT MCI Arb FConsE
 P J Davis - BSc C.Eng FStructE MICE MCIHT IMaPS FConsE
 R M Crowther - PIEMA

Registered Office: 7 Museum Street Ipswich Suffolk IP1 1HQ T 01473 280699 F 01473 280701 Registered No: 4806356

Existing Site Plan

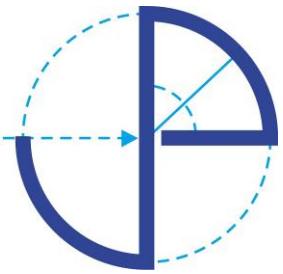


GPR, CCTV, Utility Survey



JPC Environmental Services
(A Division of J P Chick & Partners Limited)

7 Museum Street Ipswich Suffolk IP1 1HQ
T 01473 280699 F 01473 280701
E. ipswich@chick.co.uk www.chick.co.uk



We trust that the above and attached are self-explanatory however if you have any queries or require any further information please do not hesitate to contact us.

Yours faithfully,

On behalf of JPC Environmental Services

a division of J P Chick & Partners Limited

caroline.jooste@chick.co.uk

Tel: 01473 280699



Member of the Association of Consulting Engineers
Directors: J P Chick - MSc DIC C.Eng C.Env FAE FICE FStructE MCIHT MCI Arb FConsE
P J Davis - BSc C.Eng FStructE MICE MCIHT IMaPS FconsE
R M Crowther - PIEMA

Registered Office: 7 Museum Street Ipswich Suffolk IP1 1HQ T 01473 280699 F 01473 280701 Registered No: 4806356